

BOLLI Banner

A Brandeis University Program
www.brandeis.edu/bali
781-736-2992

Osher Lifelong Learning Institute at Brandeis

October 2005

VALUE = BENEFITS/COST

by Sharon Sokoloff



In BOLLI's early years many of our members asked about the cost of the program. *Why did it cost as much as it did?* I wrote Banner articles, and I presented information at an Annual Meeting to provide the basic facts. The facts today are almost the same as what they were then.

Costs

BOLLI revenue from tuition and fees is expended in three categories. Approximately two-thirds of BOLLI's costs are for staff salaries and benefits for Carol and me, plus a little bit for students. The remaining third is divided into two parts of almost equal size: (1) operating expenses such as postage, furniture, audiovisual equipment, refreshments for meetings, the Annual Meeting, and the shuttle van, and (2) overhead to the University.

The money from our gift and grant is used for program enhancements. Werner Dannheisser funds are used to support the following programs: BOLLI Scholars, International Friends, Intensive/Interim Programs, and upgrades to our facility, *e.g.*, the new wall divider in Gosman. The Osher grant enhances our program in two broad categories: technology (our new computer lab) and curriculum innovations.

At the start of this semester, several members again asked the question, *Why does BOLLI cost what it*

does? Regis College has a new program, and it is normal for people to comparison shop. I know the marketplace very well, and I am glad to have the opportunity to share my thoughts on the subject.

Benefits

BOLLI's *costs* are, for the most part, fixed. Therefore, what the BOLLI and Brandeis leadership work on is continuously increasing the *benefits* of being a BOLLI member and a member of the Brandeis community. This is why you often hear me say "value-added". In addition to the basic benefit package, up to two courses (plus a third when space is available) and 20 L&L lectures each term, we offer the following value-added benefits:

- access to Brandeis libraries
- reduced Spingold Theater ticket prices
- reduced film series prices
- Rose Art Museum special events
- free admission to many Brandeis programs and speakers (Michael Dukakis, Bernard Lewis, Tom Friedman); concerts; and Meet the Author
- affinity groups such as the Adventurers and the New Yorker Fiction group
- intercampus and intergenerational programs at the Women's Studies Research Center, the Center for Ethics, Justice and Public Life, the Heller School, and the International Business School

In addition to the ever-improving curriculum that we continue to work on, the most important asset of BOLLI is people: members, friends, community. That's what I call *value*.

Value = Benefits/Cost

ORDER IN THE COURT

by Naomi Schmidt



How does the Supreme Court decide to hear a case? What cases led up to the famous *Roe v. Wade* and *Miranda* decisions? Is there a right to privacy in the Bill of Rights, and what does it mean for such a right to come under the penumbra of those ten amendments? How large a role does precedent play in a decision?

With two vacancies being filled on the Supreme Court and the accompanying myriad of news analyses on what sort of person should fill them, those of us who have taken Bob Cohen's course *Landmark Supreme Court Decisions* have a distinct advantage. Interspersing the reading and discussion of actual cases with an introduction to the federal judicial system, the makeup of the Court including the background of the current Justices, and definitions of some legal jargon, Bob led us to a broad understanding of this important institution.

Reading the cases (which were posted on the eBoard for downloading and printing) was not easy at first; but with the help of an on-line lexicon of legal terms and a patient instructor, we were able to gain some amount of facility with the style and content of the decisions. Discussions in class were very lively, as many of us had strong opinions about some of these topics such as a woman's right to choose. Also, when exchanging views about decisions in criminal cases, we were forced to think like lawyers and jurists, rather than simply voicing

our intuitive liberal or conservative sentiments.

Bob's own experience with the legal system led to some interesting discussions as well. A graduate of the B. U. School of Law, he practiced law in Boston for 35 years, most of that time as a trial attorney, and served two terms as president of the Massachusetts chapter of the Association of Trial Lawyers of America.

He has also led a busy and varied life outside of the legal profession. Bob has been a member of the Newton School Committee, chaired the Newton Youth Commission, and was a trustee of the Jackson Homestead (Newton historical society) among his other civic contributions. Unique in his services to the community was the way he drew on his love and knowledge of horses to found and lead the Riding School in Weston, a therapeutic horseback-riding program for handicapped children and adults.



Bob Cohen

It has been gratifying to have gained a deeper understanding of the discussions surrounding the replacement of Justices Rehnquist and O'Connor; and I admit to feeling a bit smug every time I hear a defendant "Mirandized" while watching a rerun of *Law and Order*, knowing more about the history of that requirement, from *Gideon v. Wainwright* through *Escobedo v. Illinois* to the *Miranda v. Arizona* decision itself. I look forward to taking Bob's other BOLLI course, *Massachusetts, The Rules of the Game*.

**CLASSROOM
HIGHLIGHTS**

The **BOLLI Banner** is published by the Banner Editorial Committee:

Richard Glantz, *Publisher*
Tamara Chernow, *Co-Editor*
Carole Grossman, *Co-Editor*
Carol Shedd, *Secretary*
Charles Raskin
Katherine Raskin
Naomi Schmidt

Len Heier, *Photographer*

Email us at:
BALIBanner@aol.com
Next deadline:
11/4/05

REGISTRATION AT ALL-TIME HIGH

by Carol Allman Morton

This fall semester BOLLI has the highest registration ever. As of August 25, 2005, there are:

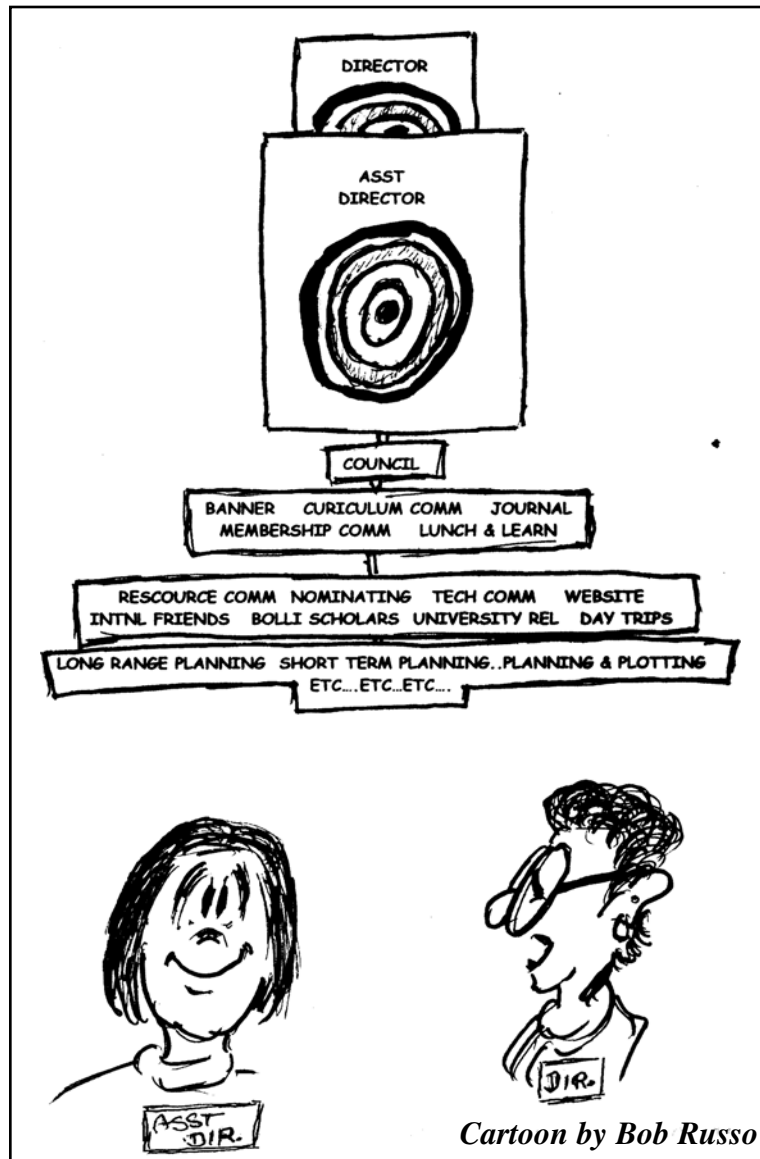
- 370 active members
- 36 associate members
- 29 inactive members
- 435 total membership.

There are 90 new members (including about 20 people who are returning after an absence). Active

membership has increased 13% from Fall 2004.

The addition of a new classroom space has allowed BOLLI to also increase the number of classes offered from 24 to 29.

Thanks to everyone who helped with recruitment, and congratulations on building such a great program!



"It may look like a target, but actually it's a promotion!"

DON'T TAKE THE BAIT

by Franklin Benjamin

A fisherman with rod and reel hopes to catch his dinner by baiting his line with an attractive morsel. Sometimes the bait is not even real food, but a colorful lure designed to fool the unwary fish.


In similar fashion, individuals who use the Internet for banking or shopping are vulnerable to *phishing*—the act of sending email to a user which falsely claims to be a legitimate enterprise in an attempt to lure the user into surrendering private information that will be used for identity theft.

Typically, the email informs the user that there is a security breach in his account which will lead to immediate termination of service unless the user supplies personal information, such as passwords or credit card numbers or account numbers. The user is directed to a Website where he is asked to update his account information. Like the hungry fish, the security-conscious user is so focused on the message that he doesn't see that the Website is bogus, cleverly designed to look like the real thing but in reality only set up to steal the user's identity.

**MONEY
TALK**

Here's a message I received:

From: eBay <support_num_21073@ebay.com>
Date: Wed, Sep 21, 2005, 1:44 PM
To: GLASSYA@RCN.COM
Subject: eBay Alert - Unauthorized Login Attempts



Dear eBay Member,

We regret to inform you that your eBay account could be suspended if you don't re-update your account information.
To resolve this problem please visit link below and re-enter your account information:

https://signin.ebay.com/ws/eBay/SAPI.dll?SignIn&sid=verify&co_partnerId=2&siteid=0

If your problems could not be resolved your account will be suspended for a period of 24 hours, after this period your account will be terminated.

For the User Agreement, Section 9, we may immediately issue a warning, temporarily suspend, indefinitely suspend or terminate your membership and refuse to provide our services to you if we believe that your actions may cause financial loss or legal liability for you, our users or us. We may also take these actions if we are unable to verify or authenticate any information you provide to us.

Due to the suspension of this account, please be advised you are prohibited from using eBay in any way. This includes the registering of a new account. Please note that this suspension does not relieve you of your agreed-upon obligation to pay any fees you may owe to eBay.

Regards,
Safeharbor Department eBay, Inc
The eBay team

Looks compelling, especially with the eBay logo [*in color in the original*]. But clicking on the URL in the email sends the user to a phony Website. Legitimate merchants will not ask for this kind of information via email; but if you have lingering doubts, click directly on www.ebay.com

Most Internet users will ignore the bait, but some will be tempted into biting.

THE COUNCIL CONSIDERS

by Carol Shedd

The Technology Committee needs someone to take over the management of the BOLLI Website. Responsibilities include posting dates on the calendar and eventually providing information on workings of the various committees.

The BOLLI Journal has set a target date of the end of this semester for the next volume of the literary magazine.

BOLLI Scholars has twenty-five students interested in participating in the program. At this time, twelve have been assigned to classes.

The Volunteer Committee has 134 members on its list, many of whom are already working on BOLLI activities. We are now paying for a Bran-deis student to set up the morning coffee, but we would prefer a roster of BOLLI volunteers to do this work.

The Communication Committee intends to start a program to notify the BOLLI community, through email, with the consent of the BOLLI member or their family, when there is a death or serious illness of one of our members. Anyone who does not wish to receive such notices can opt out on-line.

Two Upcoming BOLLI Adventures

Worcester Art Museum docent tour Thursday, 12/1 at 11 A.M.

Fifty Years of Jewish Life in America exhibit Wednesday, 1/11 at 9 A.M.

Contact Elaine Dohan at edohan@comcast.net or 508-481-4172



LET YOUR BOT DO THE WALKING

by Charles Raskin

Many people who shop on the Internet go to a popular site like Amazon.com. But is the price on Amazon the best price?

There are many places on the Internet that are shopping robots, nicknamed *bots*, that provide price comparisons. You state the item you want; and these shopping robots go out, search the Web, and report back to you with a list of Internet vendors and their prices.

Since some Internet merchants quote a low price but charge high shipping-and-handling, the best bots provide you the net price to ship to your Zip code, including any state tax that might be charged.

The following list of Websites allow you to compare prices on just about anything you would want to purchase:

LOCATION!

LOCATION!

LOCATION!

www.shopzilla.com

www.pricegrabber.com

www.mySimon.com

www.pricescan.com

www.nextag.com

www.abebooks.com (books only)

www.alibris.com (books only)

www.AddAll.com (books only)

www.cnet.com (techie toys only)

www.magazinepricesearch.com

(magazines only)

COMPOUNDING PHARMACISTS

by *Katherine Raskin*



The role of the independent community pharmacist is changing these days. Many pharmacists have returned to the early roots of pharmacy when they made medications tailored to the individual's need. The "problem-solving pharmacists" practice the art of pharmaceutical compounding, which is the method of preparing medica-

tions to meet each physician's and patient's unique needs.

Compounding is achieved through an essential triad relationship: patient | physician | pharmacist. The physician first prescribes the medication; the pharmacist takes the necessary ingredients, compounds them, and dispenses the medicine to the patient after a thorough consultation. This allows the pharmacist the opportunity to provide superior patient-oriented service.

There are several reasons why pharmacists compound prescription medication. The most important one is patient non-compliance. With a physician's consent, the compound pharmacist can change the strength of a medication, alter its form to make it easier for the patient to ingest, and add flavor to make it more palatable. They can also prepare the medication using several unique delivery systems, such as

sublingual troche (under the tongue) or lozenge, or a transdermal cream.

Compounding pharmacists have helped hundreds of patients who are experiencing chronic pain, for example, arthritic patients who cannot take medications due to gastro-intestinal side effects. Working with the physician, the pharmacist can provide the patient with a topical preparation with the anti-inflammatory or analgesic the doctor prescribed. This may also provide some relief for those patients who take blood thinners and are unable to get relief from the recommended dose of anti-inflammatory drugs.

Compounding pharmacists focus on meeting special needs of patients. The ultimate goal is to prepare a customized medication to help the physician and patient achieve a more positive therapeutic outcome. Many health maintenance organizations will accept co-payment for these compounds.

TO YOUR GOOD HEALTH

For more information go to these Websites:

Birds Hill Pharmacy (Needham)

www.birdshill.com

America's Compounding Center (Newton)

www.accrx.com

Custom Medicine Pharmacenter (Beverly)

www.custommedicine.com

Collins Pharmacy (Lawrence and Methuen)

www.conlinsnet.com

BOLLI SHUTTERBUGS AT PEABODY ESSEX MUSEUM



photo by *Alex MacLean*

Eight BOLLI members and one SID student viewed a striking exhibit of aerial photography. In this one-man show, people are not visible, and yet human presence is everywhere; the lines they have left on the land tell their stories.

To learn about future Shutterbug events, contact Glantz@rcn.com

A WALK ON THE WILD SIDE

by Tamara Chernow

October and November usually offer New Englanders some glorious days for communing with nature. We are fortunate to be able to do this in the metro-west area. Some favorite places of BOLLI members are listed below.

Lake Waban on the Wellesley College Campus offers beautiful walks along the water's edge, through wooded areas, along meadows, and past a topiary garden. Visit the college's arboretum and botanical gardens too! Parking is free in the garage near the main entrance to the campus on Route 135 in Wellesley. Ask for a map in the campus police office attached to the garage, or visit www.wellesley.edu



photo by Beth Shedd

Lake Waban

Great Meadows National Wildlife Refuge, 73 Weir Hill Rd., Sudbury, consists of freshwater wetlands stretching along 12 miles of the Concord and Sudbury Rivers and provides bird watching opportunities, walking trails, and canoeing. Another section of the refuge is located in Concord on Monsen Road off Route 62. Visit www.fws.gov/northeast/easternmanwrc/complex/ for more information.

Massachusetts Audubon Broadmoor Wildlife Sanctuary, 260 Eliot St., Natick consists of 9 miles of walking trails through a variety of natural habitats offering great opportunities for bird watching, photography, and sketching. Visit www.massaudubon.org for information about other wildlife sanctuaries.

Habitat Education Center and Wildlife Sanctuary, 10 Juniper Rd., Belmont is an 87-acre urban oasis with over 2.5 miles of gentle trails winding through deciduous and evergreen forests, across meadows, around two ponds, and along a wetland containing a vernal pool. The visitor center is a brick Georgian-style mansion with formal gardens and monthly art exhibits. www.massaudubon.org

Chase Woodlands and Peters Reservation, Farm Street, Dover are two connecting properties belonging to The Trustees of the Reservations. The first has gently sloping paths winding through groves of woodlands, and the second has moderate trails along the Charles River. Go to www.thetrustees.org for directions and information about many more of their properties.

Elm Bank Reservation, Route 16, Wellesley – one block past Wellesley College. The 182 acres of woodlands, fields, and old estate property is surrounded on three sides by the Charles River. www.mass.gov/dcr/parks/metroboston/elmbank.htm

For information and directions to many more locations for enjoying the outdoors, try these two Websites: www.mass.gov/dcr/parks/metroboston/chestnutHill.htm
www.newtonconservators.org/nearbyparks.htm

LET THE GOOD TIMES ROLL

If you prefer, borrow these books from your library for ideas and information about enjoying the diverse natural habitats nearby:

Fifty Hikes in Massachusetts by John Brady

Country Walks Near Boston by Alan Fisher

Massachusetts Trail Guide by Charles W. G. Smith

Nature Walks in Eastern Massachusetts by Michael Tougias

CALENDAR OF CAMPUS EVENTS

compiled by Charles Raskin

SLOSBERG RECITAL HALL

781-736-3400, option 5

Nov. 12 (8 P.M.)

Lydian String Quartet

The Lydians present Year V, the conclusion of their series *Vienna and the String Quartet*, exploring two centuries of the Viennese phenomenon as well as the modernist response to this classical tradition.

Beethoven: Quartet in E Minor, Op. 59, #2

Persichetti: 3rd String Quartet, Op. 81

Mozart: Quartet in Bb Major, K. 589

Concert is preceded by a lecture by Daniel Steptner at 7 P.M. Admission: \$10 for Seniors and BOLLI members

Nov. 18 (8 P.M.)

Unlocking the Guilty Pleasures of Choral Masterworks

Directed by Jane Ring Frank, the 25-voice ensemble The Boston Secession tour of choral music's greatest hits.

Hubert Parry: *I Was Glad*

Gilbert & Sullivan: *Hail Poetry*

Durufle: *Ubi Caritas*

Swingle Singers: *Bourrée for Bach*

Handel: *Hallelujah* Chorus

more...

Rediscover why everyone loves these thrilling and beloved masterworks. Admission: \$10 for BOLLI members

Nov. 20 (3 P.M.)

Brandeis-Wellesley Orchestra

Neal Hampton, conductor

Orchestral classics and world premieres.

Program will feature Stravinsky's *Firebird Suite*.

Admission: \$5 for Seniors and BOLLI members

Nov. 20 (7 P.M.)

Brandeis University Chorus

Sarah Mead and James Olesen, conductors

Program includes Brahms's *Schicksalslied* and

Bach's *Cantata #106*.

Admission: \$10 for Seniors and BOLLI members

WEDNESDAY CONCERTS AT NOON

Rapaport Treasure Hall, Goldfarb Library

Nov. 2

Free mini-concert by the **Lydian String Quartet**

Nov. 16

Free mini-concert by a Brandeis chamber music class

HASSENFELD CONFERENCE CENTER

Nov. 8 (2 - 4 P.M.)

Israeli Supreme Court Justice Speaks

Over the past several years the Israeli Supreme Court has been challenged with balancing human rights with the necessities of national security. Justice Procaccia has written opinions on major issues such as the Israeli Security barrier being erected and the disengagement plan. She is well-versed in the challenges that confront Israel and other democratic nations in today's world. She will speak on these issues, plus others within the Israeli legal system.

MEET THE AUTHOR

Atrium, Shapiro Campus Center (4 P.M.)

Nov. 9

Dan Terris

The director of the International Center for Ethics, Justice, and Public Life at Brandeis will discuss his book *Ethics at Work: Creating Virtue at an American Corporation*. The book is based on the two years Terris spent researching Lockheed Martin, one of the world's largest defense contractors.

Nov. 30

David Cunningham

In his book *There's Something Happening Here: The New Left, The Klan, and FBI Counterintelligence*, the Brandeis sociology professor uncovers the inside story of the FBI's attempts to neutralize political targets during the 1960s, focusing on programs against white hate-groups, suspected Communists, civil rights and black power advocates, and anti-war activists.