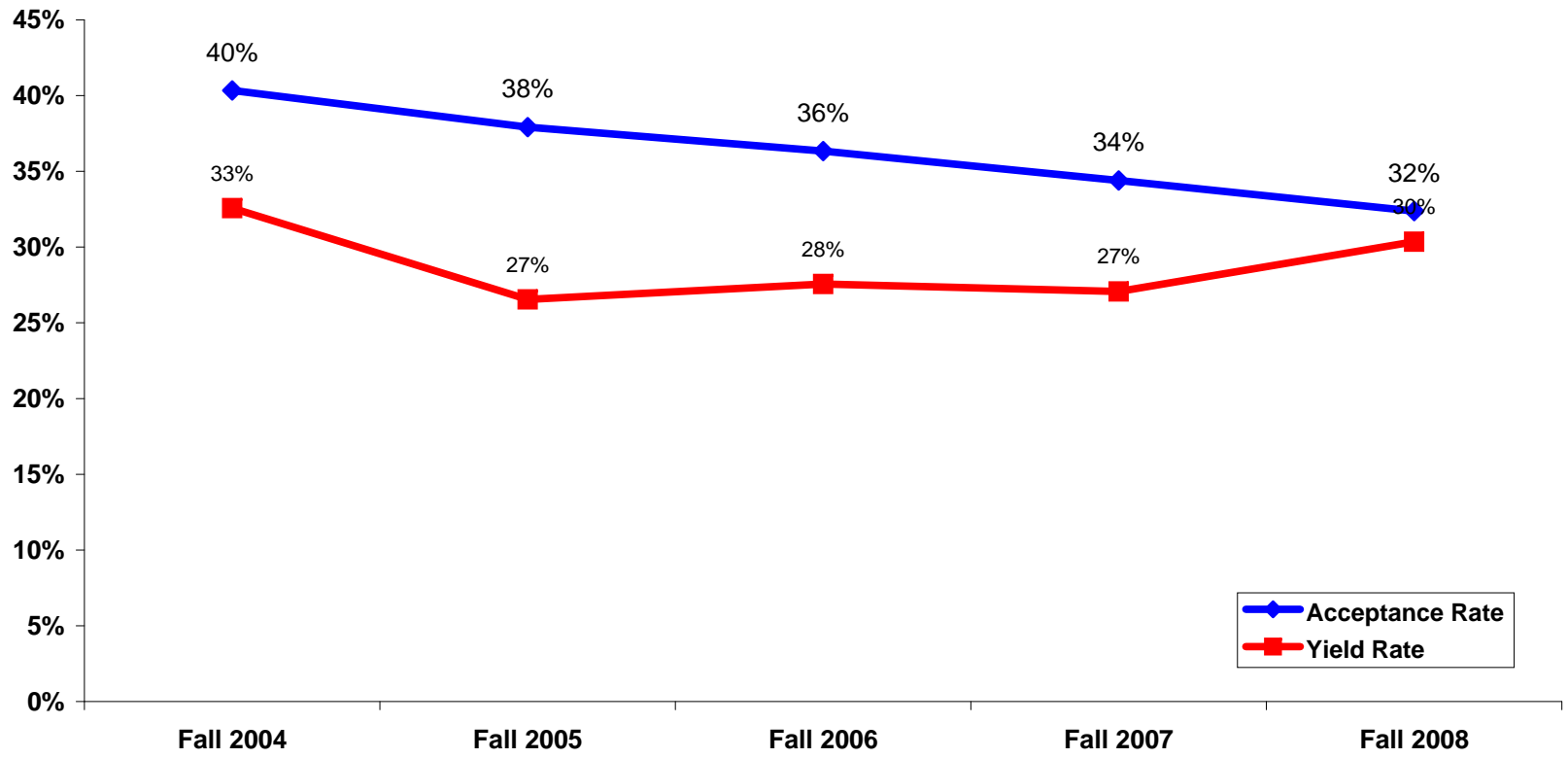


Undergraduate Admissions

	Fall 2004	Fall 2005	Fall 2006	Fall 2007	Fall 2008
Applicants	5,831	7,343	7,640	7,562	7,724
Accepted	2,352	2,784	2,776	2,601	2,501
Enrolled	766	739	765	704	759
Acceptance Rate	40%	38%	36%	34%	32%
Yield Rate	33%	27%	28%	27%	30%



SAT Scores					
	Fall 2004	Fall 2005	Fall 2006	Fall 2007	Fall 2008
25/75 percentile Composite (Critical Reasoning and Math)	1250-1440	1260-1440	1260-1460	1300-1440	1290-1450
Critical Reasoning	630-720	630-720	630-730	630-720	640-720
Math	620-720	630-720	630-730	650-740	650-730