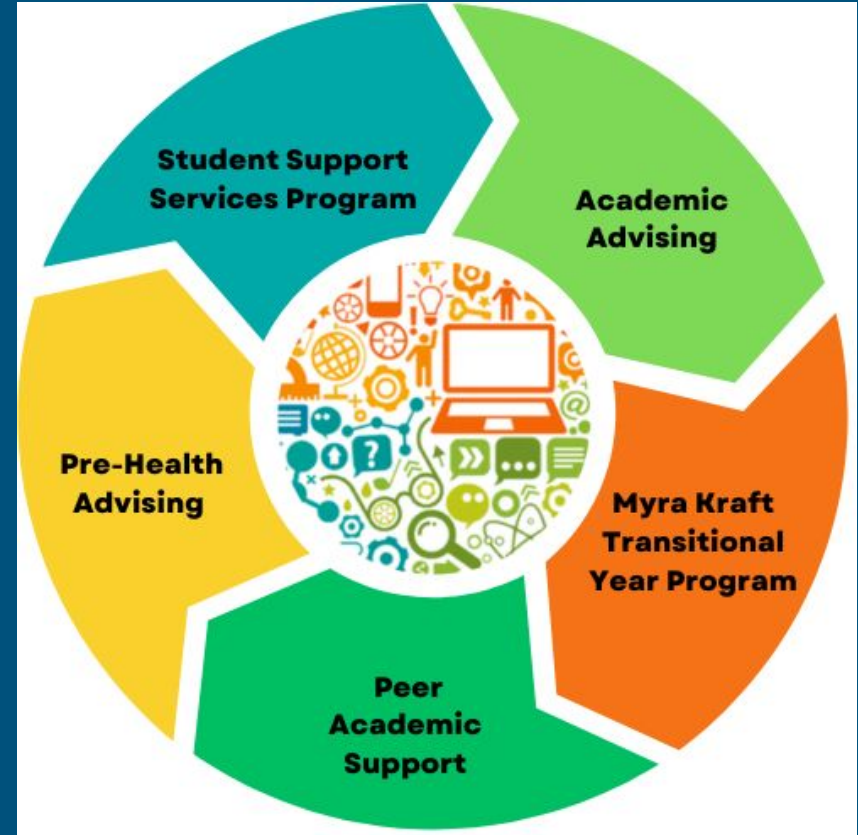


Academic Advising Teaching & Learning Salon

Lori Tenser, Dean of Academic Support and Advising
Brian Koslowski, Director of Academic Advising
Julia Mani, Director of Peer Academic Support

Academic Services

- 5 units
- 22 full-time staff
 - 14 are staff academic advisors to undergraduates
- Primary location: Usdan 2nd floor



What do Academic Advisors do?

- Responsible for an undergraduate caseload of 400-500 students
- Counsel students regarding course planning, major/minor options, academic resources and opportunities, graduation requirements, and academic policies [Do For, Walk With, Cheer On]
- Collaborate with campus partners: faculty, Registrar's Office, DOSO, BCC, Hiatt, ICC, Athletics, ISSO, etc. as part of a holistic advising strategy
- Assist students with the process to go on - or return from - a leave of absence
- Presents student petitions for academic policy to EXCO or COAS

What do Academic Advisors do?

- Lead the Independent Interdisciplinary Major program, MLK Fellows
- Liaise with the Columbia Combined Plan for Engineering
- Teach HWL 28: Strategies for Academic Success
- Serve on university committees
- Offer orientation webinars for students and families
- Attend and present at local and national conferences
- Research, propose, and implement changes to academic policy - allowing for greater transparency, accessibility, simplicity, and equity

Advising Topics

Academic Planning:	major selection course planning graduation requirements university policies
Academic Support:	study skills dealing with setbacks using resources taking a leave
Personal Growth:	goal-setting self-care identifying strengths
Exploration:	exploring interests academic opportunities (study abroad, internships)



New Advising Initiatives

Deli Drop-ins

- Every T-Th during academic year
- No appointment required



New early alert form

- Replaced mid-semester performance alert
- Concerns communicated in real time between students and faculty

UWS/Ac Serv partnership

- Latte resource-sharing
- Roosevelt Fellow visits to course sections

Enhanced study skills offerings

- Workshops, Study Skills tutors, HWL 28 (Strategies for Academic Success)

Peer Advising Support (Roosevelt Fellows)

- Group of 11 juniors and seniors
- First student point of contact for incoming students
- Extensive training on academic policies, curriculum, and navigating difficult situations
- Close collaboration with Academic Services units/advising
- Available for 20 & 30 minute appointments, and via email
- Fall drop-in utilization: 373 appts booked



Staff or student advisor- whom should I talk with?

Roosevelt Fellows

Navigating college transition & balance between academics & extracurriculars

Building relationships with professors

Perspectives on a course/instructor/major/minor

Staff advisors

Personal or health challenge impacting academics

Taking a leave/returning from leave

Navigating a challenging situation impacting academics

Petitions for exceptions

Both:

Course selection

Deciding on a major or minor; mapping out majors/minors

Connecting to campus resources

Understanding academic policies, Brandeis core, and requirements

Roosevelt Fellows & UDR's- what's the difference?

Roosevelt Fellows

Peer academic advisors across curriculum

Trained on academic policies, core & curriculum

Assigned to FY's but open to all undergrads

Events focused on registration, new student transition

Hold regular drop-in hours

Supervision in Academic Services

UDRs

Peer advisors for a specific department

Provide curricular advisor specific to dept/program

Liaisons for students & faculty within dept

Plan department events (Meet the Majors, etc)

Supervision in Dean of A&S

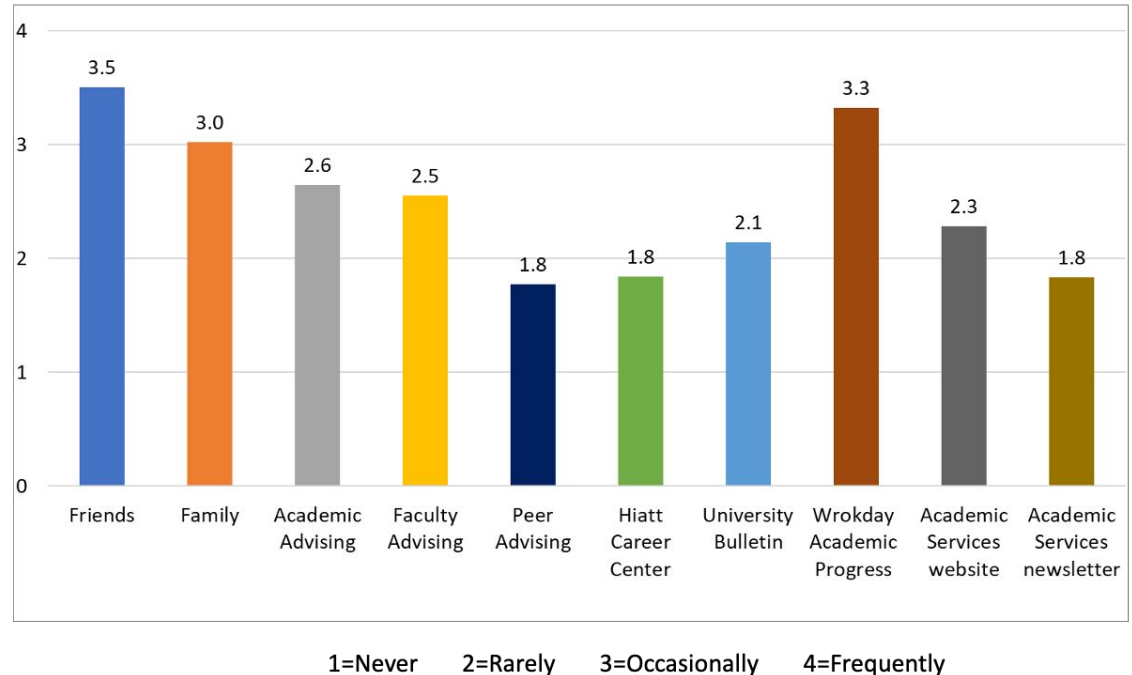
Advising Survey Results (Spring 2023)

Resources

In a typical semester, how often do you engage with the following resources to inform decisions about your academics?

Respondents indicate the resources with which they most often engage are friends and the Academic Progress page on Workday.

Peer advising, the Hiatt Career Center and the Academic Services newsletter are sighted as the least frequented resources by respondents.

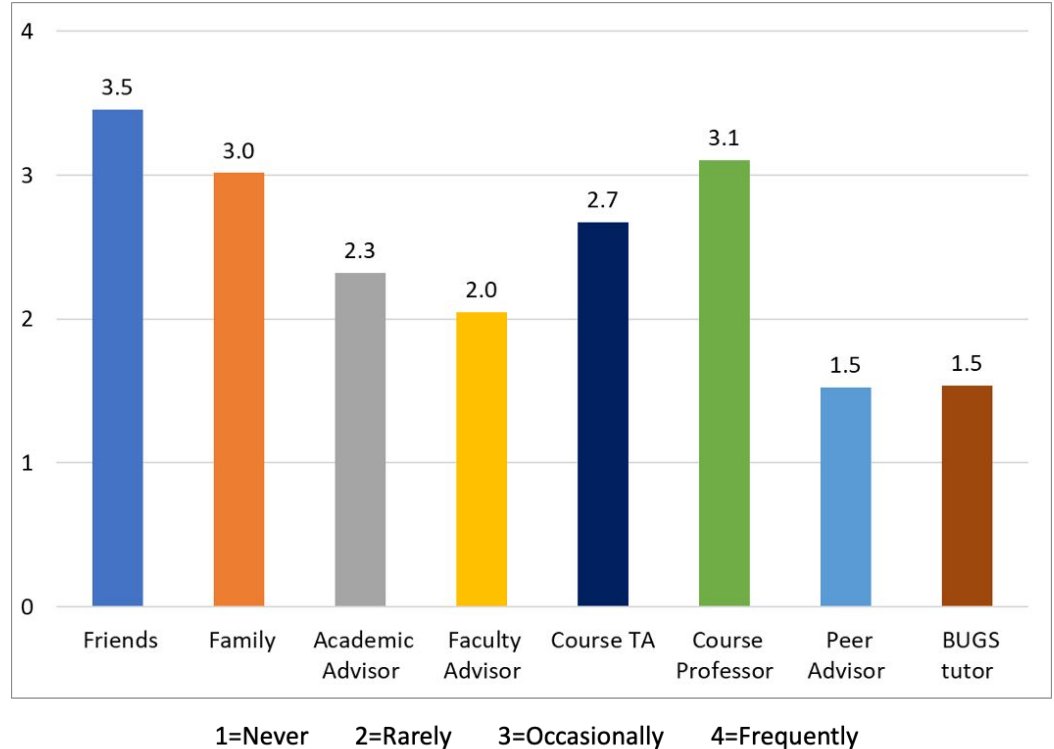


Advising Survey Results (Spring 2023)

Support through Academic Challenges

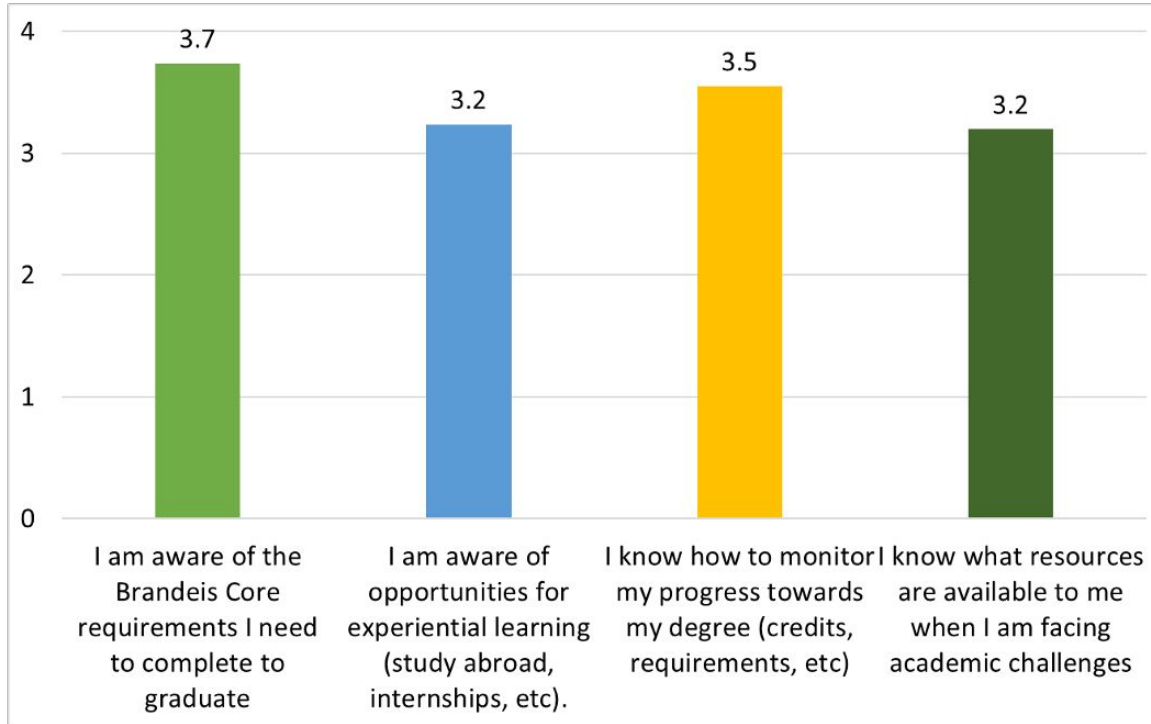
How frequently do you connect with the following people when you are facing academic challenges?

- Respondents indicate that when facing academic challenges, they most frequently connect with friends, family, the professor of the course and/or the TA of the course.
- Peer advisors and BUGS tutors are the least frequented connections sighted by respondents.



Advising Survey Results (Spring 2023)

Please share your level of agreement with the following statements:



1= Strongly Disagree 2=Somewhat Disagree 3= Somewhat Agree 4=Strongly Agree

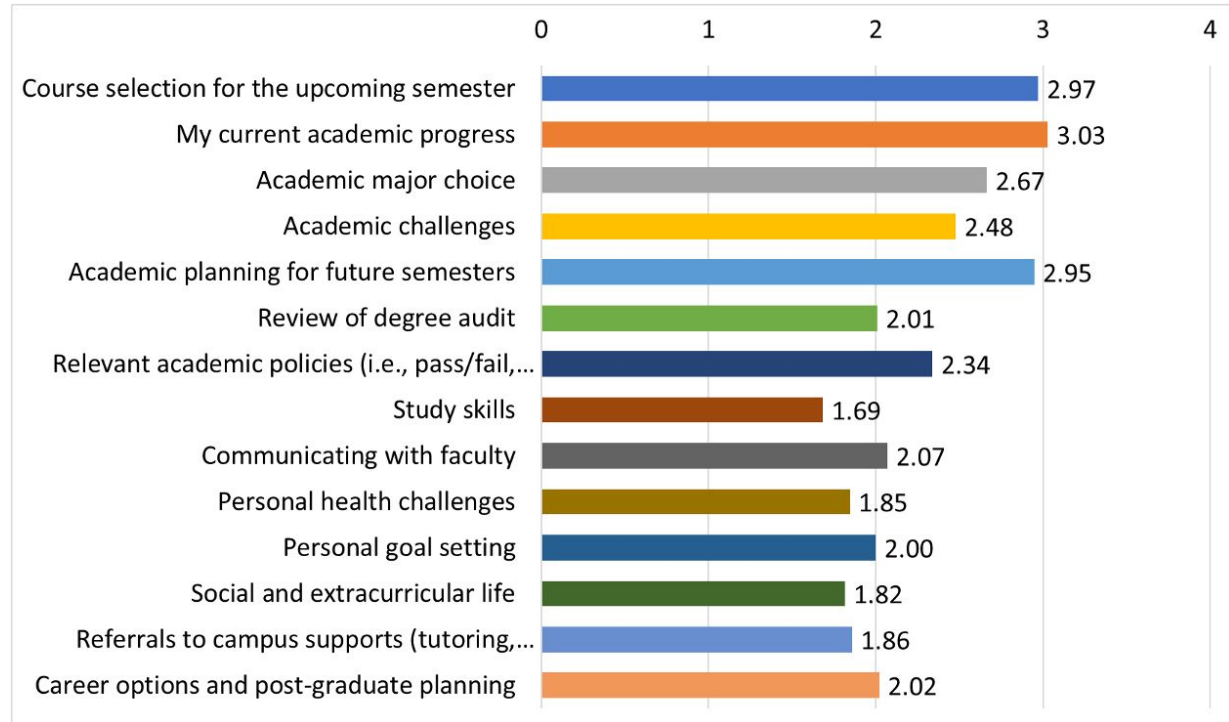
- Respondents generally agree with the statements provided. They most strongly agree that they are aware of the Brandeis Core requirements.

- There is little variation between class years

In communication and meetings with an academic advisor, how frequently do you discuss the topics below?

Academic planning, Course selection, and Academic progress are the topics most frequently discussed with academic advisors.

Topics including *Study skills, Social and extracurricular life, and Personal health challenges* are discussed with the least frequency.



1=Never

2=Rarely

3=Occasionally

4=Frequently

Discussion

What questions do you have?
How can academic advising best support you?

