



LIVING AND LEARNING IN GREATER BOSTON

BRANDEIS INTERNATIONAL BUSINESS SCHOOL



250K

**STUDENTS LIVE
IN THE BOSTON
AREA**

40

**COUNTRIES ARE
REPRESENTED AT
BRANDEIS IBS
ALONE**

BRANDEIS UNIVERSITY

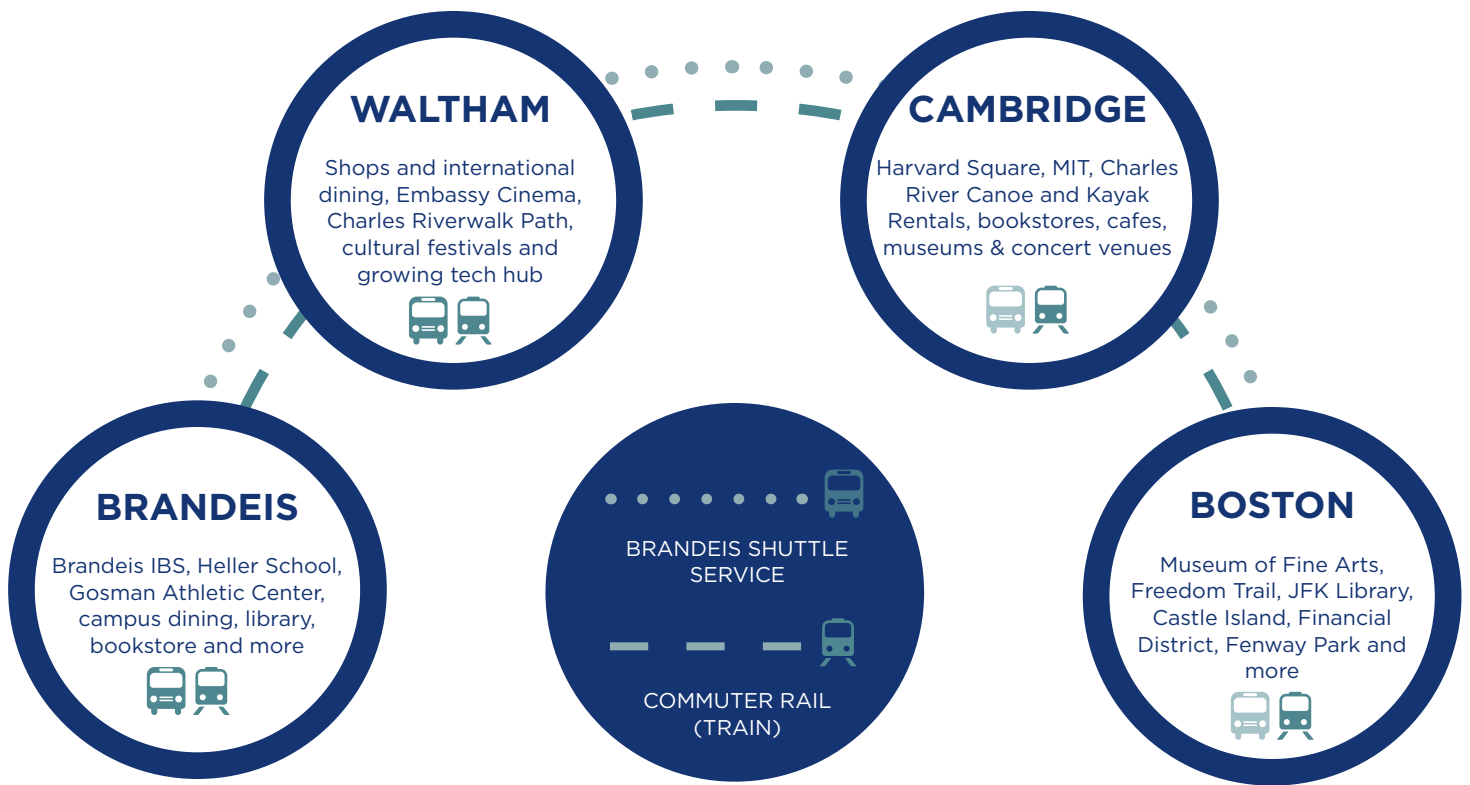
Brandeis International Business School (IBS) is part of Brandeis University, ranked among the best in the nation by *U.S. News and World Report*. Located in Waltham, it's just outside Boston where hundreds of thousands of students arrive each year to learn, engage, explore and excel.

SMOOTH TRANSITION

Whether you're coming from down the street, across the country or around the globe, our goal is to help you smoothly transition into your new home. Even before you arrive on campus, Brandeis staff will help you find an apartment, learn local customs, get acclimated to the New England weather, identify opportunities to get involved in the community and explore all the resources Boston has to offer.



Our Leadership Fellows are second-year students who act as mentors to first-year students, answering any questions you may have about academics, social life, housing and everything in between.



BOSTON & WALTHAM

Most of our students live in and around the Boston area – including the neighborhoods of Cambridge and Waltham – where they’re close to campus and also able to take advantage of all Boston has to offer. Waltham is one of the more affordable locations in the area. Students enjoy exploring Moody Street and its lively collection of shops and restaurants, as well as the Embassy Cinema. The nearby Charles Riverwalk offers jogging paths, canoes, kayaks, paddleboats and great views of the river – perfect for experiencing the beauty of New England up close. Ethnic festivals, farmers markets, lavish historical estates and quaint museums round out this energetic community.

BOSTON

YOUR WORLD IN A WORLD-CLASS CITY



Brandeis IBS students have access to many public transportation services, including the MBTA with service to downtown Boston and Waltham.



Brandeis provides free shuttle services into Boston, as well as to a variety of local attractions in Waltham.

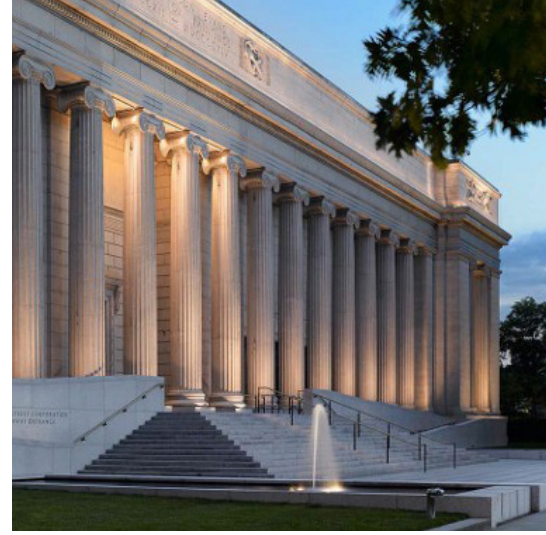


Heading out into the greater New England area is easy. Students can access ZipCar on campus and can join at discounted student rates.



48 SQUARE MILES TO EXPLORE

Boston's rich history, vibrant economy and dynamic student population make it a great place to build your network and have fun! The city is filled with historic sites, cultural institutions, museums, nightlife and exceptional dining. And if you like sports, get ready to immerse in a culture of devoted fans. Boston and New England have professional basketball, baseball, hockey, soccer and football teams – with games easily accessible via public transportation.



CITY CULTURE

Boston has something for everyone. It's a historical testament to New England and American culture, yet it remains a center of contemporary life. Its collection of world-class institutions in art, history, science, music and sports make it a sought-after destination for living, learning and working among the best in the world.



Boston's **North End**, a collection of Italian restaurants & historic sites

Fenway Park, the epitome of American sports culture

Quincy Market hosts an international food court and live performances



YOUR CAREER IN BOSTON

The city is a leading financial hub with a growing tech and innovation industry, making it a great location in which to build your career. Our Career Strategies Center organizes industry treks, company visits, alumni speaker series and networking events where students engage with local companies. Field projects enable students to contribute to the growing number of startups and entrepreneurial ventures in the city.

Brandeis IBS is connected with many local professional organizations including MassChallenge, the StartUp Institute, the New England-Israel Business Council, Massachusetts Business Roundtable, and more. Students are invited to events through these partnerships and leave with meaningful connections that open career opportunities.



DISCOVER NEW ENGLAND



Brandeis IBS is in the heart of New England, known for apple picking and pumpkin carving in the fall, snow, skiing, skating and sledding in the winter, and some of the world's best beaches and hiking spots in the spring and summer.



From the sands of Cape Cod to the mountains of Vermont, New England weather and geography is as diverse as our student body.



WORLD READY NOW.

At Brandeis International Business School (IBS), we prepare students to become World Ready. No matter where you currently live, work or study, there's a path to Brandeis IBS and a supportive community of scholars and students waiting to welcome you. Start your journey now and prepare for an experience that is anything but business as usual.




CONNECT WITH US

 @WorldReadyNow

 brandeis.edu/global

 facebook.com/brandeisibs

 781-736-2252

COMMUNITY CONNECTIONS

Keep up with activities in Waltham and Boston:

 @BOSPublicMarket

 @SocialInBoston

 @RestoWeekBoston

 @DiscoverWaltham

